

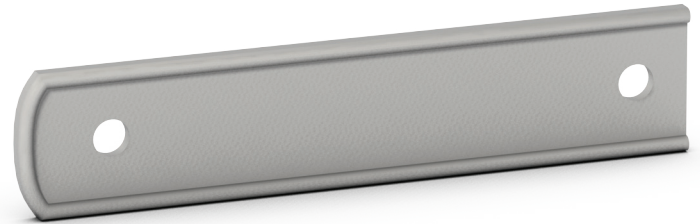
Technical Data Sheet: IB Heavy Duty Steel Batten Bar

Product Description: IB Heavy Duty Steel Batten Bar is made of Galvalume®. All ends have been rounded and edges have been deburred. Holes are punched into each bar with a standard spacing of 6" or 12" on center (O.C.). IB Heavy Duty Steel Batten Bar with special hole spacing can be made to order.

Advantages:

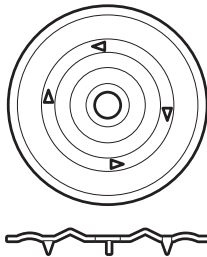
- Width: 1" Thickness: 16 gauge Hole: 1/4" flat

Installation Instruction: IB Heavy Duty Steel Batten Bar is designed to secure Single-Ply membrane to steel, wood and concrete decks using the appropriate IB Fastener.



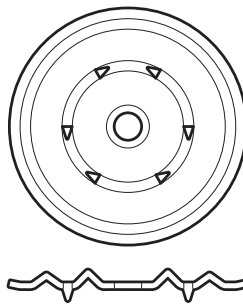
IB Heavy Duty Steel Batten Bar Physical Data		
Length	Pack	Weight
10'	Tube	103 lbs.

Technical Data Sheet: Fastener Plates



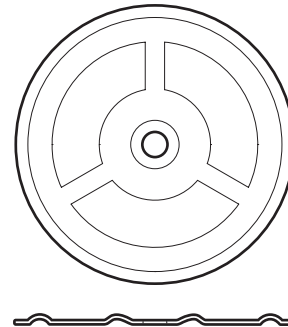
2" Barbed Membrane Plate

For use with: Wood, Light Gauge and Heavier Steel



2-3/8" Magnum Barbed Membrane Plate

For use with: Steel, Concrete, and Wood Fiber



3" Galvalume Insulation Plates

For use with: Cover-boards and Insulation over any roof deck

Description	Cat. No.	Diameter	Packaging	Weight
2" Barbed Membrane Plate	6-0900	2"	1000	29 lbs.
2-3/8" Magnum Barbed Membrane Plate	6-0905	2 3/8"	1000	52 lbs.
3" Galvalume Insulation Plate	6-0910	3"	1000	37 lbs.