

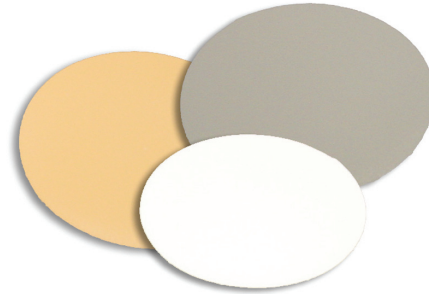
Technical Data Sheet: 5" Round T-Patch

Product Description: Generally used to patch T-joints (mandatory on 80 mil projects).

Weight: 3.5 lbs. per pack.

Packaging: 50 patches per pack.

Available Colors: Available in all IB membrane colors.



Technical Data Sheet: Inside Corner

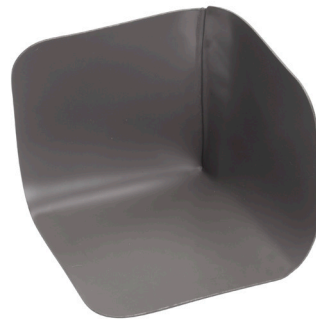
Product Description: 60 mil IB factory fabricated inside corner is made for easy installation, and helps reduce job site human error. Can be utilized for 60 - 90° inside corner details.

Weight: .21 lbs. / 22 lbs. per box.

Packaging: Individual / 100 per box

Available Colors: Available in all IB Membrane and DeckShield colors

Note: Not for use on canted corners



Inside Corner Specifications		
Type of Corner	Height (side)	Width (side)
Inside Corner	5"	5"

Technical Data Sheet: Outside Corner

Product Description: 60 mil IB factory fabricated outside corner is made for easy installation, and helps reduce job site human error. It can be utilized for outside 90° corner details.

Weight: .3 lbs. / 17 lbs. per box.

Packaging: Individual / 50 per box.

Available Colors: Available in all IB Membrane and DeckShield colors.

Note: Not for use on canted corners.



Outside Corner Specifications		
Type of Corner	Height (side)	Width (side)
Outside Corner	5"	5"